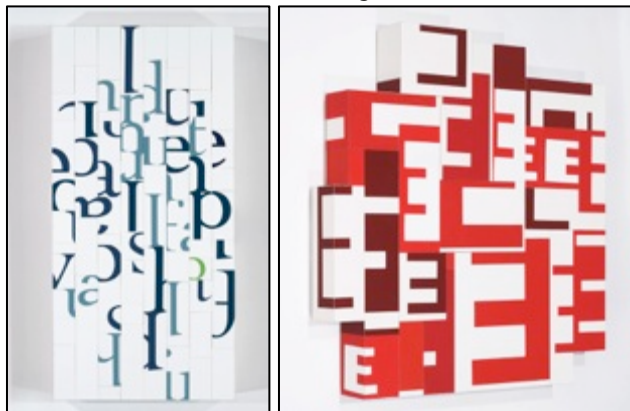


FOR IMMEDIATE RELEASE, August 28, 2012



**CONTACT:**

Drew Porterfield  
Long View Gallery  
1234 9- Street NW  
Washington, DC  
20001  
202.232.4788  
drew\_porterfield@longviewgallery.com  
www.longviewgallerydc.com

**Cheryl Wassenaar: *Syntax***  
**September 27 – October 28, 2012**

Washington DC – Long View Gallery is pleased to announce *Syntax*, an exhibition by Cheryl Wassenaar, opening on Thursday, September 27, with a public reception from 6:30-8:00pm. The exhibit will be on view through October 28, 2012.

Cheryl Wassenaar is a visual artist who explores the function of text in a hybrid practice of painting, sculpture, and design. She works primarily with found and fabricated commercial signage, repurposing the discarded wood into visual metaphors of communication that borrow from the language of modernist painting, contemporary advertising, and technology.

In *Syntax*, Wassenaar presents a new body of work, equally familiar and unsettling. Familiar, at first, is the alphabet taught to us at an early age, represented here in bold and vibrant colors. Seeing *Syntax* for the first time, the viewer's instinct is to start "reading" the artwork, deciphering words and sentences, to help understand their meaning. But Wassenaar often presents the letters cut in half, upside down, repeated, or illegible, abstracting them and pulling them out of context. It doesn't take long for the letters to become forms, unsettling our ability for "reading" and eliminating the opportunity for understanding based on language. Wassenaar's abstractions inspire the viewer to experience the work and its associations to communication in a new way.

Merging aspects of graphic design, painting, and sculpture, Wassenaar's *Syntax* evokes visual stutters of sounds and ideas. Repetition, shifted grids and horizontal bands allude to structures of communication and organization, made inept through technology glitches, overlapping conversations, acronyms and verbal filler. The work often has a nostalgic tone, as its surfaces carry the residue of accumulated experiences and traces of wear and weather. Scavenged from roadways and the wastelands of commercial sprawl, these wooden signs are the loud voices of city commerce, crowding our urban landscapes with the insistent messages of industry. Others pieces are more ephemeral in reference, evoking airwaves, rhythm, tone of voice and restraint.

Cheryl Wassenaar's work is exhibited nationally and internationally, appearing in over fifty group and solo exhibitions. Her work was featured on three book covers and selected for *Studio Visit* and *New American Painters*, both published by Open Studios Press. Wassenaar's corporate collections include Fidelity Investments in Boston, and Steelcase, Inc. in New York, Philadelphia, and Washington D.C. She recently won an international design competition for a permanent public artwork in the Urban Institute for Contemporary Art's new facility in Grand Rapids, MI. Cheryl Wassenaar received her BFA from Calvin College and her MFA from the University of Cincinnati. She is currently Associate Professor in the College of Art at the Sam Fox School of Design & Visual Arts, Washington University in St Louis, Missouri.

**GALLERY HOURS**

Wednesday – Saturday, 11am – 6pm,  
Sunday, 12pm – 5pm, and by appointment.

**IMAGES ARE AVAILABLE FOR REPRODUCTION**

Left image: "diction", 33 x 16 x 4", vinyl, wood 2012  
Right image: "lock", 30 x 33 x 5", found commercial signage, vinyl, 2012

###