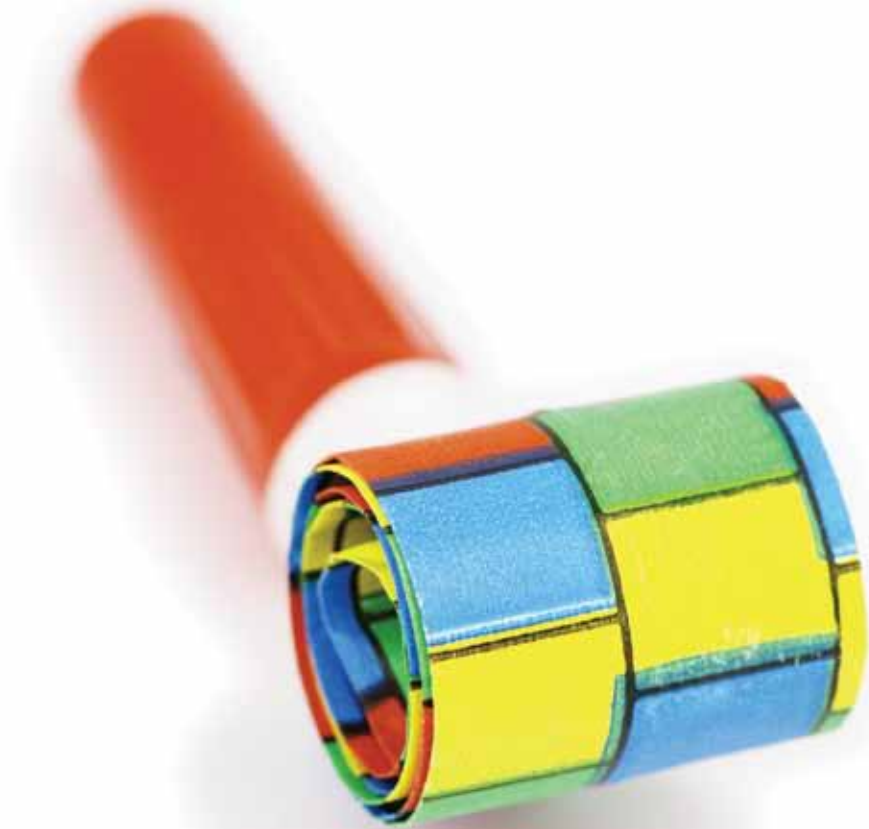
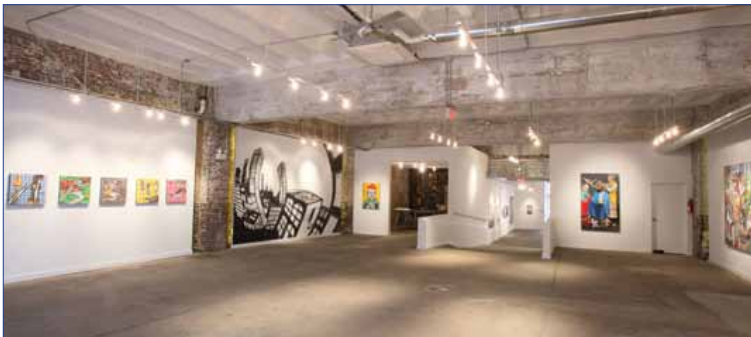


p'arty



long view gallery

part gallery. part event space. all art.



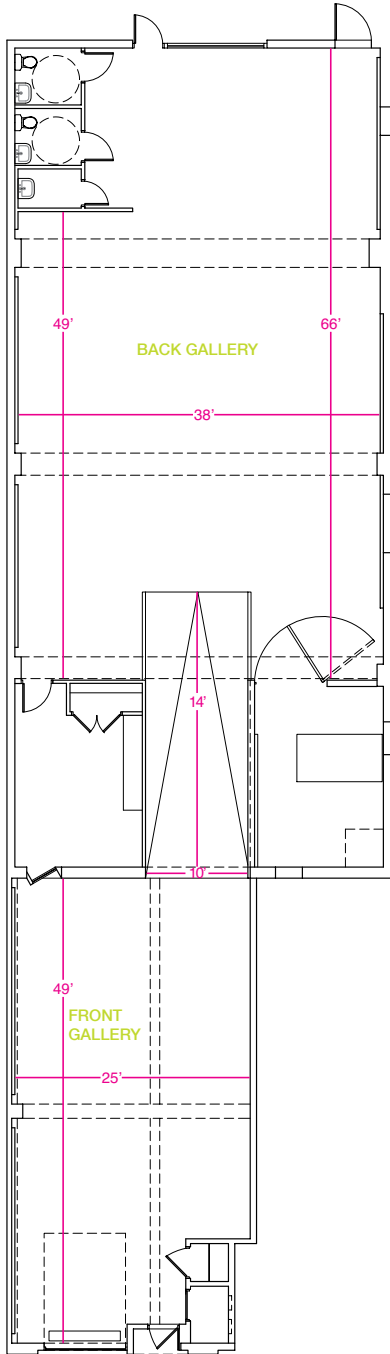
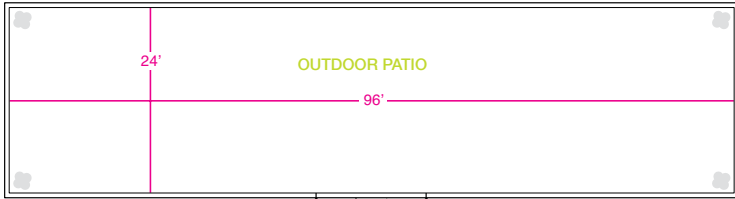
long view gallery features 5,000 square feet of superior interior with two flexible halls, impeccable lighting and all the smart tech to raise your next event to an art form. For corporate occasions, life celebrations and all sorts of hip happenings.



long view gallery

part gallery. part event space. all art.

1234 ninth st nw | washington, dc 20001 | 202.232.4788 | longviewgallery.com



p'art event space

- 5,000 SQUARE FEET OF DIVISIBLE HISTORIC WAREHOUSE SPACE
- 250-300 PERSON COCKTAIL CAPACITY
- 20 FOOT CEILINGS 175 FT WITH TRACK LIGHTING
- HANDICAP ACCESSIBLE
- FINISHED CONCRETE FLOORS
- TWO 9'x11' ALUMINUM ALLOY GLASS DOORS
- FLOODED WITH NATURAL LIGHT
- OPENS TO HISTORIC BLAGDEN ALLEY
- ADJACENT TO THE WASHINGTON CONVENTION CENTER
- VERSATILE 20'x11' WALL PANEL FOR PROJECTIONS
- CATERING STAGING AREA
- SPEAKERS, IPOD AND WIRELESS MIKE HOOKUP
- WIRELESS INTERNET ACCESS
- 2,500 SQ FT OUTDOOR PATIO



long view gallery

part gallery. part event space. all art.

1234 ninth st nw | washington, dc 20001 | 202.232.4788 | longviewgallery.com



MIKE WEBER, THE COMMISSIONER, 2010, 34.25x39.5x1.5,
PHOTO-BASED MIXED MEDIA ON CANVAS

p'art gallery

- CONTEMPORARY GALLERY FEATURING PREDOMINATELY LOCAL AND REGIONAL ARTISTS, BOTH EMERGING AND ESTABLISHED
- MONTHLY EXHIBITIONS AND A GROWING PERMANENT COLLECTION
- DESIGN CONSULTATION THAT INCLUDES SELECTION, DELIVERY AND INSTALLATION
- FREE DELIVERY AND INSTALLATION OF PURCHASED ART AND FRAME ORDERS
- CUSTOM, CONSERVATION FRAMING SERVICES BY IN-HOUSE MASTER FRAMER
- WORKS FRAMED IN HOUSE FEATURE LARSON-JUHL MOLDINGS, ACID-FREE MATS AND MUSEUM GLASS
- FLEXIBLE PAYMENT OPTIONS AVAILABLE
- 25% FRAMING DISCOUNT ON ANY WORK PURCHASED FROM LONG VIEW GALLERY
- \$100 OFF FOR FIRST TIME FRAMING CUSTOMERS



ANNA U. DAVIS, UNTITLED #1, 20x20, MIXED MEDIA



TONY SAVOIE, DOGGED OPTIMISM, 48x48,
REVERSE PAINTED ACRYLIC AND MIXED MEDIA



long view gallery

part gallery. part event space. all art.

1234 ninth st nw | washington, dc 20001 | 202.232.4788 | longviewgallery.com

overheard

“It is unlike any other space I have seen in DC - a totally hip, industrial meets modern, clean space. [...] If you are looking for a reception space that you can totally transform to fit your theme and vision, this is it! This spot will be sure to razzle dazzle anyone who steps into the gallery.”

DANIELLE FREEDMAN: DISTRICTWEDDINGS.COM

“It’s not secret that I’ve been on a search for modern or industrial spaces for wedding receptions in the DC area. It’s tough to find a raw, industry, loft-like spaces for events here in DC. I think my wish finally came true! I visited Long View Gallery a few weeks back. Party art gallery and party event space, this is a welcome addition in the Shaw/Convention Center area. It is the space DC has been waiting for, a great contrasting alternative to the plethora of historical buildings!”

VICKY CHOI, PRESIDENT OF EVENTS ACCOMPLISHED: EVENTACCOMPLISHED.WORDPRESS.COM

“The venue’s blank canvas appeal and flexibility to work all types of events and budgets makes the space highly desirable and completely unique in the metro area.” TRACY LEAMAN, MEETINGS AND EVENTS: A BLOG BY CVENT

“As an Event Producer with access to many venues, it is different from the rest and I look forward to many evenings spent “eventing.” Overall, the location and design plus the talents of Suzi Molak in running an event space make this an ideal place to host a wide range of events.”

JANA CHOVANEC: EVENT PRODUCTION/LIGHTING DESIGN

“Long View Gallery continues its march to being the most interesting and exciting gallery in the mid-Atlantic region. With fearless shows of raw emotions, vivid colors and everyday struggles, it has pushed forward into some very exciting art.” DAVID MIXNER: DAVIDMIXNER.COM

“Long View’s relocation is a major coup for the neighborhood—we are retaining an awesome business that needs to expand and a notable vacant building is getting new life.”

RENEWSHAW: RENEWSHAW.CO



long view gallery

part gallery. part event space. all art.

1234 ninth st nw | washington, dc 20001 | 202.232.4788 | longviewgallery.com

let us help you raise your next event to an art form



drew porterfield

gallery director
gallery: 202.232.4788
drew_porterfield@longviewgallery.com

Drew Porterfield is curator and director of Long View Gallery. In the past three years, he has executed over two dozen critically acclaimed exhibits of works by predominately local and regional artists. His eye for collectible established and up-and-coming area artists has garnered the gallery a strong following of patrons and praise in countless metropolitan Washington publications.

Drew resides in the Shaw neighborhood of Washington, DC, with his partner, Ralph Brabham. He is a neighborhood activist, volunteer, and booster. A weekend warrior, he spends much of his free time working on his house and around the neighborhood. He is a regular traveler, an aspiring chef, a fitness devotee and a loyal dog owner to his boxer-beagle mutt, Walker.



suzi molak

events director
gallery: 202.232.4788
direct: 202.716.9636
suzi_molak@longviewgallery.com

Suzi Molak is events director at the new Long View Gallery, where clients capitalize on her dynamic background and long list of successes in the art and events industry. Suzi brings to Long View a unique perspective gained through years of high-profile activity in New York City.

After an education in art history, Suzi spent over three years leading a world-renowned Italian art glass company to establish its presence in US markets. Her efforts brought the company to limelight through a PR and events campaign that included collaborations with Fashion Rocks NYC and the Lincoln Center Lifetime Achievement in Film awards. With that success freshly on her heels, Suzi's next endeavor brought a new gallery to the famed SOHO art district in NYC, where her creativity and leadership took the upstart from pre-construction planning to flourishing success. Never slowing down, Suzi relocated to DC in 2007, and began helping individual and corporate clients with unique event ideas and planning. Through these pursuits, it quickly became clear that the DC area was missing something so many of her clients and others desired—a modern venue for exciting, inspired events. Suzi's vision now joined with that of the team to proudly bring DC the new Long View Gallery.



long view gallery

part gallery. part event space. all art.

1234 ninth st nw | washington, dc 20001 | 202.232.4788 | longviewgallery.com



siobhan gavagan

art consultant

gallery: 202.232.4788

direct: 571.215.2734

siobhan_gavagan@longviewgallery

Siobhan Gavagan manages Long View Gallery's art consultancy with a focus on exposing new artists to commercial and trade accounts, including interior designers, architects and contract furnishings buyers. Siobhan recognizes that every corporate art or interior design project requires special attention and specializes in fulfilling each client's interest and budget.

Utilizing creative resources from around the globe, Siobhan manages the process seeking out diverse artists and adding them to our growing portfolio. In addition to art, she also assists with custom framing options and brings a fresh creative approach to each environment.

Siobhan's previous experience in sales and consulting includes being assistant director of Susan Calloway Fine Arts Gallery in Georgetown and as former gallery manger for Zenith Gallery in downtown DC. She is a graduate of George Mason University with a BA in Art and Visual Technology, concentration in Painting.

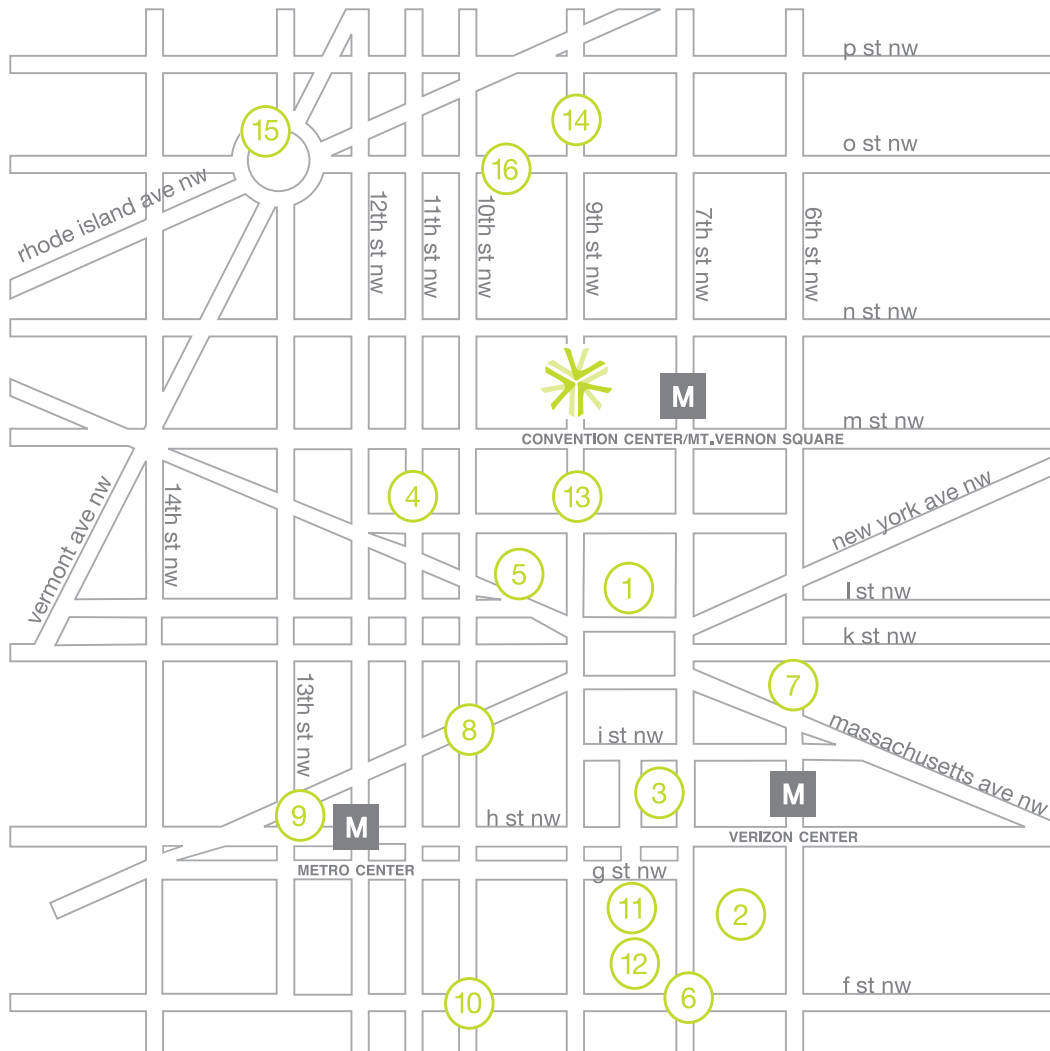


long view gallery

part gallery. part event space. all art.

1234 ninth st nw | washington, dc 20001 | 202.232.4788 | longviewgallery.com

map



- | | |
|----------------------------------|---|
| 1. Washington Convention Center | 9. National Museum of Women in the Arts |
| 2. Verizon Center | 10. Madame Toussauds |
| 3. Renaissance Hotel | 11. Smithsonian American Art Museum |
| 4. Morrison Clark Inn | 12. National Portrait Gallery |
| 5. Henley Park Hotel | 13. Corduroy Restaurant |
| 6. Hotel Monaco Washington | 14. Vegetate Restaurant |
| 7. Hampton Inn Convention Center | 15. Logan Circle |
| 8. Embassy Suites | 16. DC Guest House Bed and Breakfast |



long view gallery

part gallery. part event space. all art.

1234 ninth st nw | washington, dc 20001 | 202.232.4788 | longviewgallery.com

preferred vendor list

Caterers

Long View Gallery works exclusively with these approved Catering Companies. Please select one of the following:

Occasions Caterers

Matt Sipala
msipala@occasionscaterers.com
202.607.0824

Well Dunn Caterers

Ric Marino
rmarino@welldunn.com
202.669.1395

Ridgewells Catering

Susan Lacz
susan@ridgewells.com
301.907.3714

Main Event Caterers

Event Design Staff
703.820.2028
info@maineventcaterers.com

Design Cuisine

Sarah Gallo
sgallo@designcuisine.com
703.769.7348

Windows Catering Company

Chris Dunn
cdunn@catering.com
703.752.9409

Spilled Milk Catering

Amit Gulati
amit@spilledmilkcatering.com
202.525.6455

Decor

(themes, specialty furniture, creative ideas)

Chicka Chicka Boom Boom

Erin Cermak
cermake@ccbcreative.com
410.365.5367

Graphic Design

SugarB Studio

Kari Becker Beard
kari@sugarbstudio.com
202.271.7767
www.sugarbstudio.com

Lighting and Production

Frost Lighting

Fred Elting
FredE@frostoplighting.com
703.866.5153

John Farr Lighting Design

John Farr
john@johnfarrlighting.com
301.390.2728

Tenting

Perfect Settings

Terri McFarlane
tmacfarlane@perfectsettings.com
301.674.8021

Capital Party Rentals

Jodi Lee Orndorff
jorndorff@capitalpartyrentals.com
703.928.3044

Security

Long View Gallery works exclusively with:

Massive Entertainment

Security
Lance Hogan
lance@massiveusa.com
301.728.1137

Florists

Flowers by Sidra

Sidra Forman
sidraforman@gmail.com
202.234.4598
www.sidraforman.com

Greenworks Florist

Meg Bradshaw
202.265.3335
meghan@greenworksflorist.com

Furniture

AFR Event Furnishings

Heidi Berger
hberger@rentfurniture.com
202.321.6814

Valet

Marc Parc Valet

Michael Jasser
mjasser@marcparcvalet.com
202.223.2830 extension 6852

Atlantic Valet

Suzy Zamrik
Szamrik@asgpark.com
202.466.5050

Photography

Susan Hornyak Photography

Corporate and Wedding Photography
susanhornyak@gmail.com
301.263.0349

Rodney Bailey

Wedding Photography
Rodney Bailey
info@rodneybailey.com
703.440.4086

Imagination Photography

Corporate and Wedding Photography
Tony Brown
tony@imijphoto.com
301.230.4545

Conrad Erb Photography

Wedding Photography
conrad@conraderb.com
(888) 595-3850

Musicians

Jaime Mizell Eason

DJ
Jaime@e2events.com
301.938.8369
www.e2events.com

Holland & Burns

DJ
Gavin Holland
gaholland@gmail.com
703.919.8157

Laissez Foure

Jazz Band
Ken Mathews
Ken_mathews@cox.net
571.232.5677



long view gallery

part gallery. part event space. all art.

1234 ninth st nw | washington, dc 20001 | 202.232.4788 | longviewgallery.com

artfully working for you



CURTIS SPEER

Long View Gallery offers residential and corporate art consultation and custom framing to interior designers and trade, architects, builders and developers, underscoring the value of art in public spaces, workplaces or in hospitality and healthcare environments. Our services span a wide range of media, providing resources to meet your businesses specific needs and interest, including budget and deadlines. We also partner or assist in client presentations or arranging space specific commissions.

Siobhan Gavagan manages Long View Gallery's art consultancy with a focus on exposing new artists to commercial and trade accounts, including interior designers, architects and contract furnishings buyers. Siobhan recognizes that every corporate art or interior design project requires special attention and specializes in fulfilling each client's interest and budget.

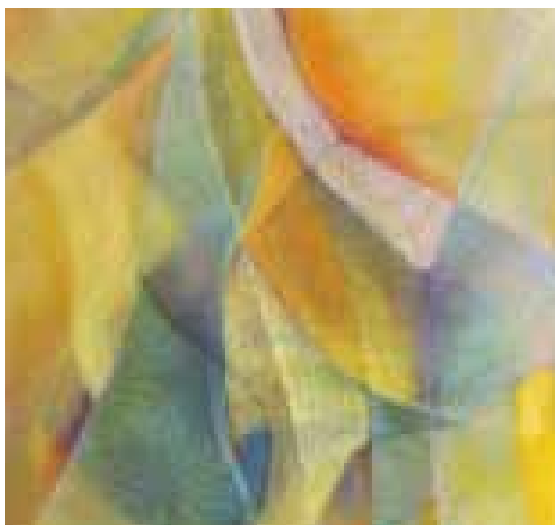
Utilizing creative resources from around the globe, Siobhan manages the process seeking out diverse artists and adding them to our growing portfolio. In addition to art, she also assists with custom framing options and brings a fresh creative approach to each environment.

Siobhan's previous experience in sales and consulting includes being assistant director of Susan Calloway Fine Arts Gallery in Georgetown and as former gallery manger for Zenith Gallery in downtown DC. She is a graduate of George Mason University with a BA in Art and Visual Technology, concentration in Painting

For more information contact Siobhan Gavagan:
siobhan_gavagan@longviewgallery
202.232.4788



ANNE MARCHAND



JOAN KONKEL



long view gallery

part gallery. part event space. all art.

1234 ninth st nw | washington, dc 20001 | 202.232.4788 | longviewgallery.com